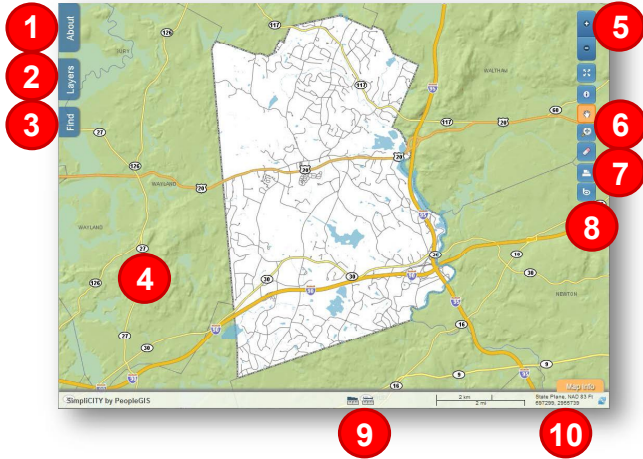


# MapsOnline Top 10

Click on any of the Top 10 MapsOnline features below to learn more about their operation:



1. ABOUT TAB
2. LAYERS TAB
3. FIND TAB
4. MAP WINDOW
5. ZOOM BUTTONS

6. MOUSE TOOLS
7. PRINT BUTTON
8. BING MAPS BUTTON
9. MEASURE/AREA TOOLS
10. SCALEBAR/MOUSE COORDINATES

## Layers Tab

Provides a listing of all available mapping layers, including controls for:

- turning layers on and off
- controlling which mapping layers will return information when the user clicks on them with the Identify Tool.

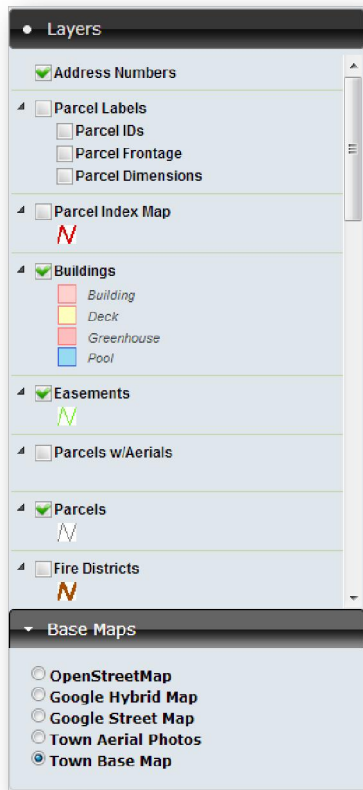
There are two categories of mapping layers available in MapsOnline: Layers and Base Maps:

**Layers:** Layers can be considered overlays. Each layer can be turned on or off. Each layer can be Identified to produce attribute results.

**Base Maps:** Base Maps are backgrounds that usually consist of multiple layers. Only one Base Map can be turned on at one time. Base Maps are always “tiled”, i.e. they are prepared in advanced as tiled maps so that they perform extremely fast over the Internet. With this approach, users can experience full-screen maps without having to have extremely fast Internet connections or robust computers.

**Google Base Maps:** MapsOnline includes Google Hybrid and Google Street base maps for all public sites that are not password protected (as per Google’s licensing requirements). This allows our clients to enjoy these familiar backgrounds underneath their own overlays.

**Open Street Map:** MapsOnline includes OpenStreetMap as another popular background. OpenStreetMap can be used on MapsOnline sites with or without passwords, so it is available on any MapsOnline site.



## Find Tab

Provides several search mechanisms designed to help users find particular properties or map features. This tab includes three separate categories of searches:

### Quick Zooms

Enables the user to find and zoom to district areas on the map. We envision a Quick Zoom list for each town so that users can zoom into their town quickly. We envision Quick Zoom lists of Points of Interest in the region (water bodies, landmarks, etc.). Other examples include neighborhoods, businesses, public buildings, and others.

### Find Properties:

Enables the user to find a property based on an Owner's Name, Parcel ID, or Address (street name and street number). These searches are primary tools for many public users of MapsOnline.

### Find Abutters

Enables the user to find abutters to a focal property (as found using the Find Properties above or using the Identify Tool and clicking on a single parcel) for any distance (the default distance is zero). Abutters are presented as a list and as a map.

Quick Zooms

Zoom To:

Parcel Map

Points of Interest

Pick a location from any of the Quick Zoom lists above to zoom the map to that location

Find Properties

Owner:

Parcel ID:




Address:  #

Clear

Find Abutters

Parcel ID:

Distance (ft):  Go Clear

   XLS

Parcel ID: 09-179	X
Location: 6 BAYBERRY LANE	
Owner(s): MIRABELLO JOHN M EST C/O FRANK MIRABELLO EXEC	
Mailing Address: 135 PARTRIDGE DRIVE ROCKY HILL, CT 06067	

Parcel ID: 09-179	X
Location: 6 BAYBERRY LANE	
Owner(s): MIRABELLO JOHN M EST C/O FRANK MIRABELLO EXEC	
Mailing Address: 135 PARTRIDGE DRIVE ROCKY HILL, CT 06067	

Parcel ID: 09-178	X
Location: 483 ORCHARD STREET	
Owner(s): MANAGER SANDRA P	
Mailing Address: 483 ORCHARD STREET ROCKY HILL, CT 06067	

Parcel ID: 09-180	X
Location: 16 BAYBERRY LANE	
Owner(s): EHRHARDT DAVID W	
Mailing Address: 16 BAYBERRY LANE ROCKY HILL, CT 06067	

## About Tab

Presents your project logo and provides links to Contacts, a custom Disclaimer, and a page describing the MapsOnline online service.



## Map Window

Presents your Town's GIS mapping layers. The Map Window is built to fill your computer screen, thereby maximizing its size. The user can use the Zoom Controls (see below) to zoom into and out of the map, or double-click the map to zoom in, or use the scroll wheel on your mouse to zoom in and out. The user can click and pan the map in any direction with the mouse as well.



## Navigation Bar

The MapsOnline Navigation Bar provides several tools for manipulating the map, interacting with map features, and executing tasks, as follows:

### Zoom Buttons



**Zoom Controls:** Enables the user to zoom-in or zoom-out from the maps current zoom level.



**Zoom Full:** Enables the user to zoom the map to its full (original) extent.

### Mouse Tools



**Identify:** Enables the user to click on map features to obtain attribute information about those features. This tool will only return results for those layers that are configured to return attributes.



**Pan:** Enables the user to pan the map in any direction. This is the default "map mode" when a MapsOnline site is originally opened (which is why this tool is shown in the orange color indicating it is active).



**Zoom-In:** Enables the user to zoom-in to any area they drag a box around. The user clicks a point with this tool, holds the mouse button down, and drags a box. Upon release, the map zooms to the box.



**Zoom-Previous:** Enables the user to zoom the Map Window to the previous zoom box.

### Special Function Buttons



**Eraser:** Enables the user to erase/remove selected features (generated by searches) and abutters (generated by Find Abutters).



**Print:** Enables the user to print the current map. This tool will activate a modal window which will provide additional controls for the user to establish a map to print on their local printer. See Print Tools below.



**Bing Map:** Open a Bing Map window focusing on the same area of the current map. This adds the familiar Bing oblique aerial view to the MapsOnline experience. The Bing oblique imagery is not available in all areas and is limited to non-password-protected sites (as per Microsoft's licensing requirements). See Bing Maps below.

## Printing Tools

The Print Tools provide the user with the ability to set the map title, map scale, paper size, and layers that appear in the legend. The final map can be saved locally as a PDF or sent directly to the user's local printer.



## Bing Map

The Bing Map Window provides the familiar Microsoft Bing oblique aerial imagery experience to MapsOnline. The Bing Map Window will open to the same approximate area of the current Map Window. Users are provided with the standard Bing controls to pan, zoom, and rotate the imagery.



### Map Info Tab

The Map Info Tab provides a constantly updating scalebar (in both feet and meters), a Measure Distance Tool, a Measure Area Tool, and cursor coordinates. By default, the default coordinates will be from the State Plane Grid, North American Datum 1983. However, we have added a control that allows the user to change these coordinates to Latitude and Longitude in case they are more familiar with that system.

