



# Fore River Bridge Replacement Project

## FORE RIVER BRIDGE (ROUTE 3A OVER FORE RIVER) REPLACEMENT PROJECT TRAFFIC SHIFT TO ALIGNMENT ON THE NEW BRIDGE

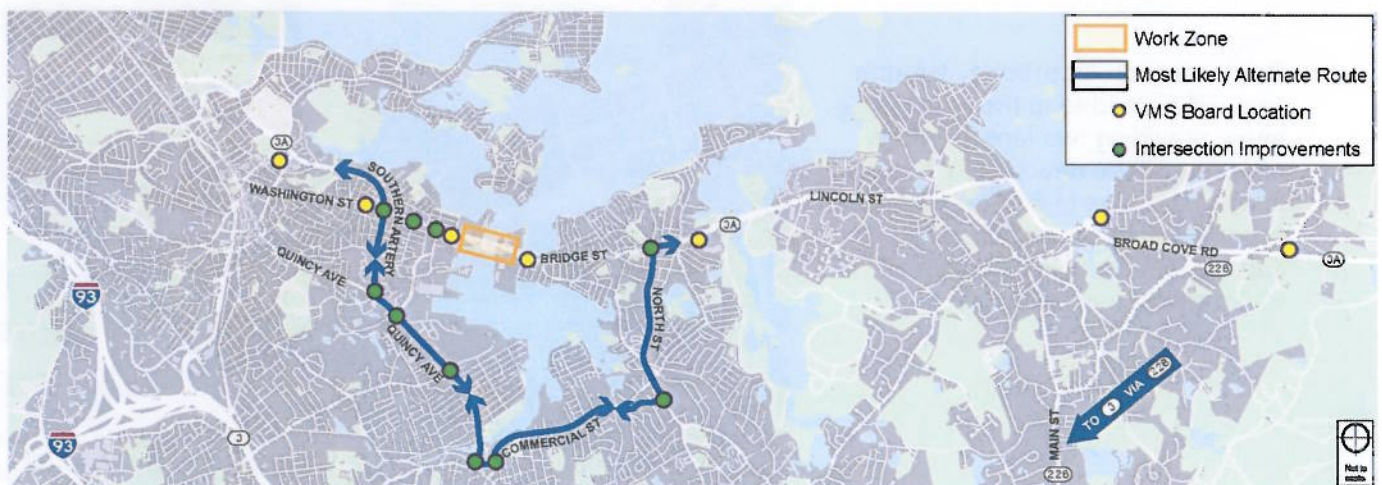
During the summer of 2017, MassDOT’s contractor, White-Skanska, will commence shifting Route 3A from the temporary Fore River Bridge to its permanent replacement. This move is associated with reduced capacity on the bridge (detailed staging follows on page 2). Through its public involvement process, MassDOT has learned that during reduced capacity at the bridge, the most likely alternate route is via Weymouth Landing, and intersection improvements have been made along the route. VMS boards will be placed on Route 3A from the intersection of Mayor Thomas J. McGrath Highway to just before its intersection with Route 228, as well as on Washington Street after the intersection with Sumner Street to warn drivers of the upcoming shift.

### For traffic heading east (towards Hingham)

- Traffic may proceed as follows:
  - Proceed straight to continue on Southern Artery
  - Turn left onto Quincy Avenue
  - Turn left onto Commercial Street
  - Turn left to stay on Commercial Street
  - Turn left on North Street
  - At the traffic circle, proceed straight to continue on North Street
  - Turn right to continue on Route 3A (Bridge Street)

### For traffic heading west (towards Boston)

- Traffic may proceed as follows:
  - Turn left onto North Street
  - At the traffic circle, take the second exit for North Street (heading South)
  - Turn right onto Commercial Street
  - Turn right to stay on Commercial Street
  - Turn right on Quincy Avenue
  - Turn right on Southern Artery
  - Proceed straight at the intersection with Washington Street to continue on Route 3A

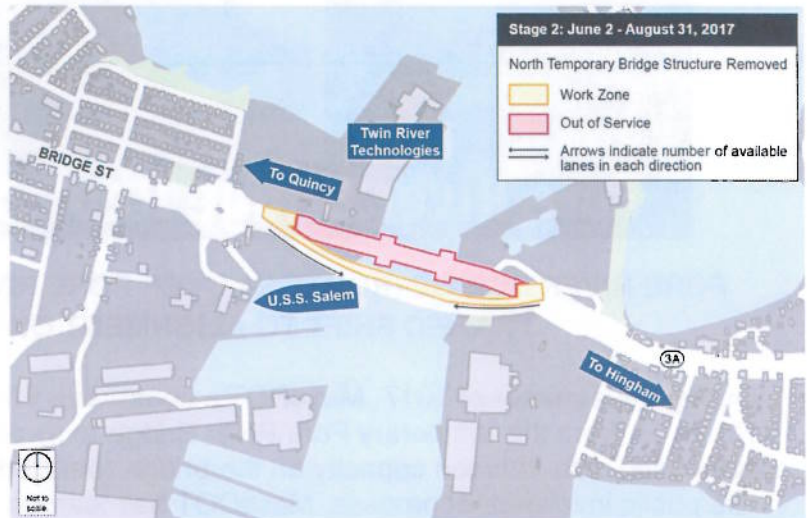


For any immediate questions or concerns regarding any construction activities at the Fore River Bridge site, please call **617-504-2924**. This telephone number is operated by a member of the White-Skanska design/build team and is live at all times when construction activities are underway.



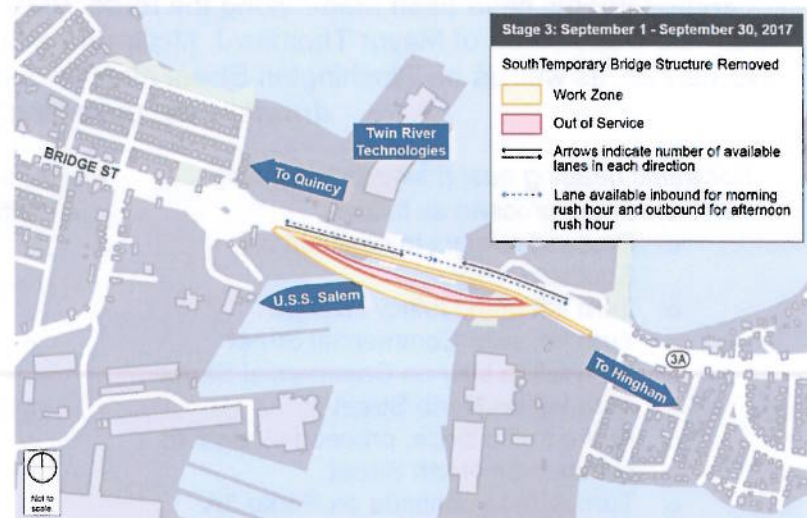
### Stage 2:

For the purposes of this document, *stage 1* is considered to be existing conditions with traffic on the temporary bridge. Beginning on **June 2** and continuing through **August 31, 2017** traffic will be removed from the northern temporary bridge and one lane of traffic in each direction will be routed over the southern temporary bridge. The north temporary bridge structure will then be removed. Unlike during stage 3, a contraflow lane cannot be provided during this stage due to impacts associated with MBTA routes, emergency services, and local businesses.



### Stage 3:

**September 1 through September 30**, three lanes of traffic will be moved to the new bridge. There will be one permanent lane traveling in each direction, and the middle lane will change direction to match peak hour flows: during the a.m. peak two lanes will flow inbound (towards Boston), and in the p.m. peak two lanes will flow outbound (toward Weymouth). The south temporary bridge structure will then be removed placing the temporary bridge out of service.



### Stage 4:

**Beginning on October 1**, a fourth lane will be added to the new bridge span, providing two lanes in each direction on the new bridge. Work will then commence to finalize pedestrian accommodations, but full vehicular capacity will be achieved with all traffic on the new structure.

