



MILTON COMMUNITY PROFILE

Prepared by the Data Center of the Metropolitan Area Planning Council
60 Temple Place, Boston, MA 02111 (617) 451-2770
January 2002



DEMOGRAPHICS

Population by Age Group (U.S. Census Bureau)

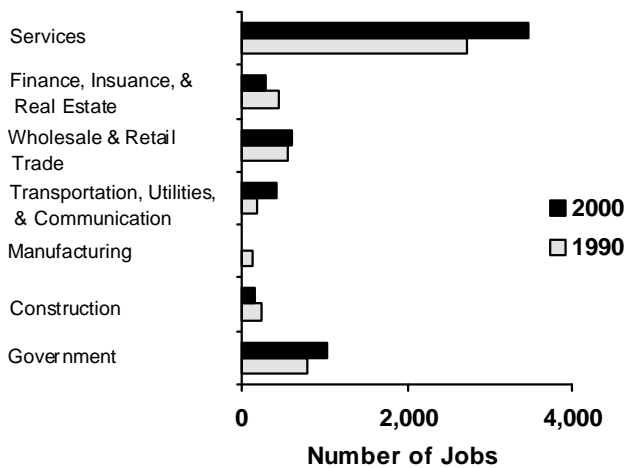
	1990	2000	Change
Median Age	37.1	39.3	5.9%
Under 5	1,724	1,640	-4.9%
5 to 9	1,670	1,832	9.7%
10 to 14	1,485	2,064	39.0%
15 to 19	1,676	1,959	16.9%
20 to 24	1,939	1,301	-32.9%
25 to 34	3,427	2,533	-26.1%
35 to 44	4,168	4,212	1.1%
45 to 54	2,576	4,155	61.3%
55 to 64	2,548	2,132	-16.3%
65 to 74	2,361	1,947	-17.5%
75+	2,151	2,287	6.3%
Total	25,725	26,062	1.3%
Under 18	22.3%	25.8%	
Over 65	17.5%	16.2%	

Race and Ethnicity (U.S. Census Bureau)

	1990	2000
Not Hispanic	98.8%	98.3%
White	92.8%	84.4%
Black	4.5%	10.0%
Asian	1.0%	2.0%
Other	0.5%	0.4%
2 or more	n/a	1.4%
Hispanic	1.2%	1.7%

EMPLOYMENT

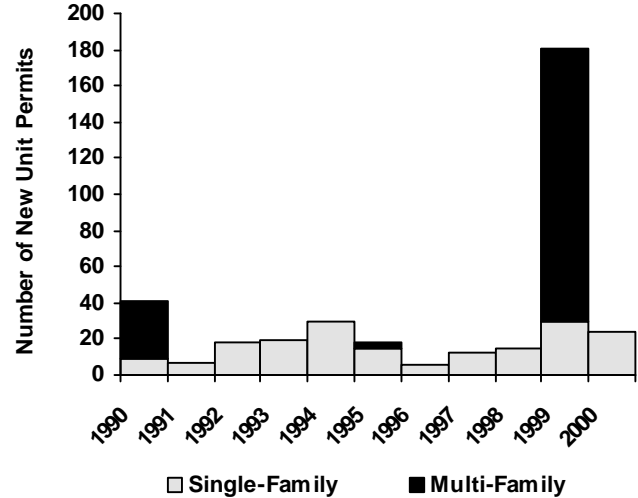
Employment by Sector (MA Div. of Employment and Training)



	1990	2000
Total Employment	5,128	6,051
Unemployment Rate	3.7%	1.9%
Average Annual Wage	\$24,075	\$30,610
Number of Establishments	434	486

HOUSING

Building Permits (U.S. Census Bureau)



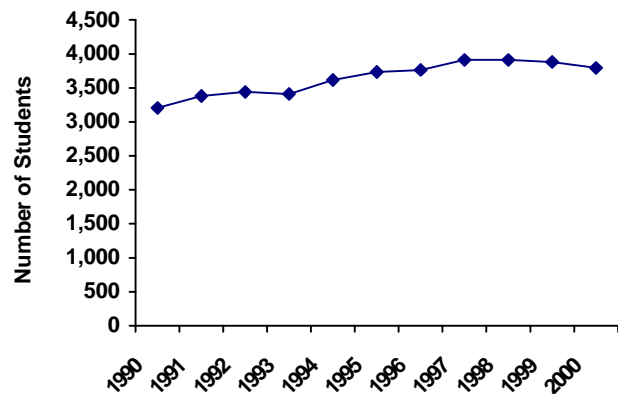
Tenure and Sales (U.S. Census Bureau and The Warren Group)

	1990	2000
Owner-Occupied	80.2%	82.5%
Renter-Occupied	17.0%	15.6%
Vacant Units	2.8%	2.0%
Total Housing Units	9,003	9,161
# of Sales	284	395
Median Sale Price	\$186,325	\$315,000

(All Sales)

EDUCATION

School Enrollment (MA Department of Education)



	District
School	Milton
Grade Levels	K to 12
Regular Day PPE	\$5,296
Students per Computer	12.7
Computers on Internet	7%



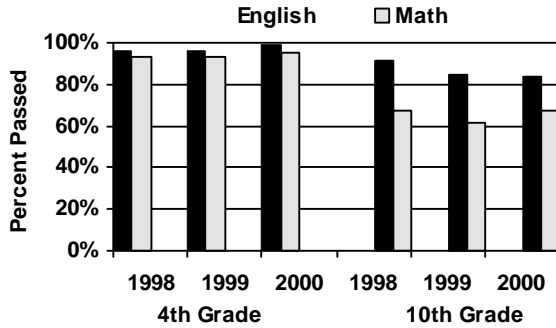
MILTON COMMUNITY PROFILE

Prepared by the Data Center of the Metropolitan Area Planning Council
60 Temple Place, Boston, MA 02111 (617) 451-2770
January 2002

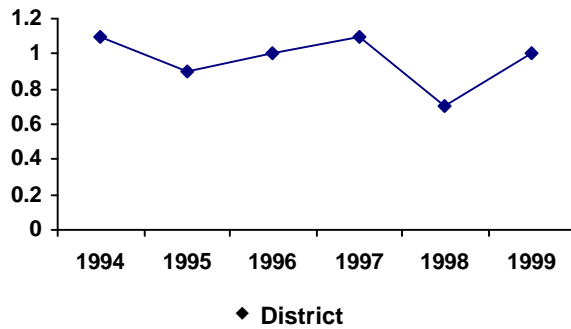


EDUCATION (continued)

MCAS Scores (MA Department of Education)



Dropout Rate (MA Department of Education)



COMMUNITY VITALITY

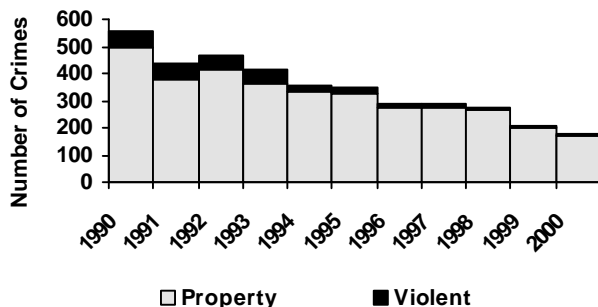
Voter Participation (MA Secretary of the Commonwealth)

	1990	2000	Change
Eligible Voters	19,976	19,341	-3.2%
Registered Voters	16,657	18,153	9.0%
Percent Registered	83.4%	93.9%	

Political Affiliation (MA Secretary of the Commonwealth)

	2000
Registered Democrat	45.6%
Registered Republican	11.5%
Registered Other/Unenrolled	43.0%

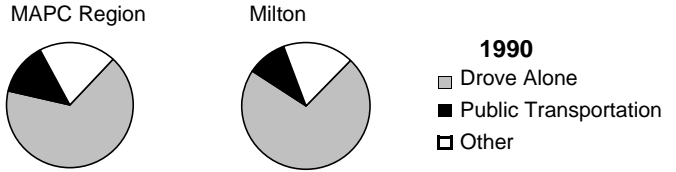
Crimes Reported (MA State Police, Crime Reporting Unit)



Blank spaces denote crimes not reported

TRANSPORTATION

Modes of Transportation (U.S. Census Bureau, MassHighway and MA DMV)



	1990	2000	Change
Eligible Drivers (16+)	20,566	20,112	-2.2%
Registered Vehicles	16,593	19,268	16.1%
Reported Fatal Crashes	4	1	-75.0%

ENVIRONMENTAL RESOURCES

Land Use (MassGIS and The MacConnell Land Use Survey)

	1991 Acres	1999 Acres	Change
Forestry	3,174	3,116	-1.8%
Agricultural	248	205	-17.1%
Open Land	837	836	-0.1%
Wetlands	272	272	0.0%
Single-Family	3,594	3,693	2.8%
Multi-Family	66	67	1.5%
Commercial	63	63	0.1%
Industrial	140	141	0.5%

Buildout Capacity (MAPC)

(Numbers represent buildout beyond existing development)

Developable Land Area (Acres)	878
Total Residential Lots	870
Commercial/Industrial	
Buildable Floor Area (sq. ft.)	0
Water Use (gal/day)	0
Dwelling Units	870
Future Residents	2,342
Residential Water Use (gal/day)	175,620
Municipal Solid Waste (tons/yr)	1,201
Non-Recycled Solid Waste (tons/yr)	854
Students	374
New Roads (miles)	13

Results of MAPC Buildout for communities based upon community input and zoning regulations

Water Use (MA Department of Environmental Protection)

Water Source	MWRA
Water Restrictions (1999)	No
One or more Contaminated Water Sources	No

1994-1998 Average (gal/day)

Daily Withdrawal Amount	*
Daily Registered/Permitted Amount	*